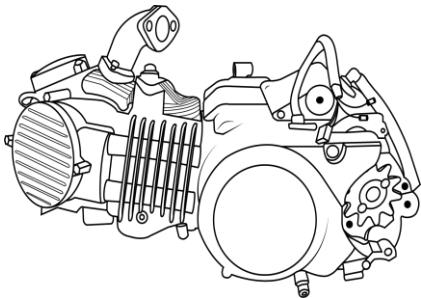




ZONGSHEN 190CC ENGINE



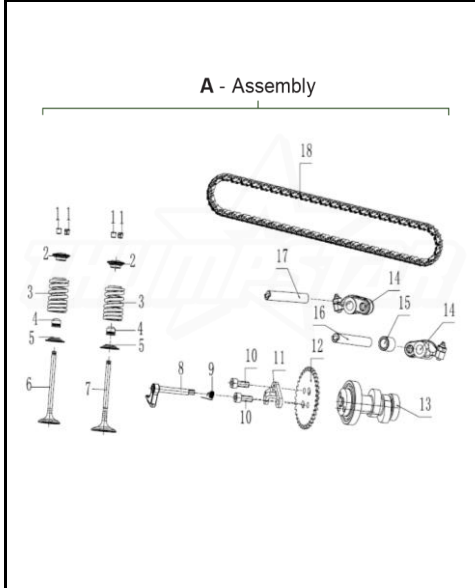
thumpstar.com.au  
thumpstar.co.nz  
thumpstarusa.com

FOR ILLUSTRATION ONLY

CYLINDER HEAD COVER ASSEMBLY		POS.	PART NO	ERP CODE	ENGLISH NAME	QTY	NAME
<p>A - Assembly</p>	A	TS0069			Complete Assembly		
	1		100055588-0006		Bolt, M6x20	4	GB16674小盘螺栓M6x20(兰白锌)
	2		100056258-0002		Cylinder End Loam Cake	1	W190缸头上盖组合(抛丸转化)
	3		100061486		Seal Ring,Of Upper Cover Cylinder Head	1	W190缸头盖密封圈
	4		100032827-0001		Bolt, M6x105	2	GB70.1螺栓M6x105(兰白锌)
	5		100106562		Washer,φ6.2x1xφ10	3	平垫圈(φ6.2x1xφ10)
	6		100010971-0003		Screw, M6x12	1	GB819.1螺钉M6x12(兰白锌)
	7		100061405		Rocker Axle Dead Plate	1	W190摇臂轴固定板
	8		100100535-0006		Nut	4	SB125气缸头AB柱螺母M8(兰白锌)
	9		100106576		Washer,φ8.5x2xφ18	4	平垫圈(φ8.5x2xφ18)
	10		100100867		Dowel Pin,φ8x12xφ6.3	1	定位销φ8x12xφ6.3
	11		100107798		O-Ring,φ6.5x1.8	1	O型圈(φ6.5x1.8 丙稀酸脂)
	12		100104154		Spark Plug	1	ZY150火花塞部件(NGK_CPR8EA)
	13		100056258-0002		Cylinder End Combination	1	W190气缸头组合(抛丸转化)
	14		100010835-0001		Bolt, M6x10	1	GB70.1螺栓M6x10(兰白锌)
15		100100441-0005		Bolt,M6x32	2	GY6缸头排气口双头螺栓M6x32(兰白锌)	

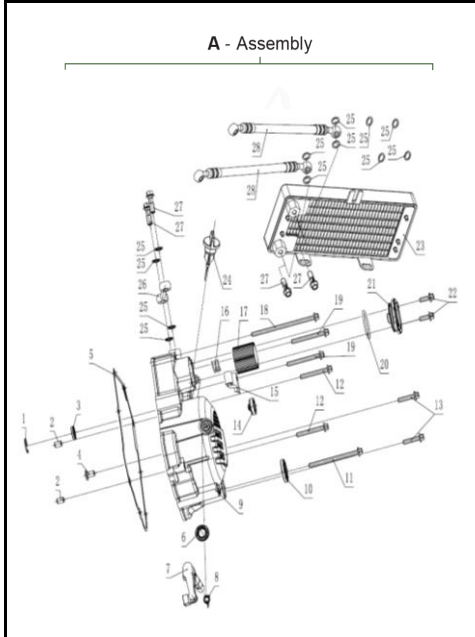
CYLINDER ASSEMBLY		POS.	PART NO	ERP CODE	ENGLISH NAME	QTY	NAME
<p>A - Assembly</p>	A	TS0070			Complete Assembly		
	1		100010557		Pin,φ10x14	4	DT190气缸头密封垫组合(钢垫)
	2		100208887		Gasket Assy Cylinder Head	1	W190气缸体部件(无缸标,铝合金,抛丸转化)
	3		100061501-0001		Cylinder Block Assembly	1	平垫圈(φ10x1.2xφ16)
	4		100106579		Washer,φ10x1.2xφ16	1	ZS96平衡轴螺栓M10x16x1.25(兰白锌)
	5		100100418-0001		Bolt,M10x16x1.25	1	DT190气缸体密封垫(倒垫)
	6		100208605		Gasket Cylinder Block	1	W150张紧器密封垫(不含石棉)
	7		100208743		Gasket Tensioner	1	W150张紧器组合(带螺栓,带O型圈,带弹簧,抛丸转化)
	8		100200521-0001		Chain Tensioning Wheel	1	GB16674小盘螺栓M6x18(兰白锌)
9		100011531-0007		Bolt, M6x18	2	气门锁夹	

**VALVE MECHANISM**



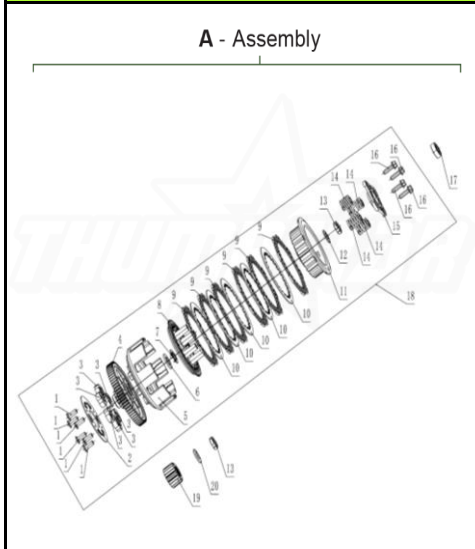
POS.	PART NO	ERP CODE	ENGLISH NAME	QTY	NAME
A	TS0071		Complete Assembly		
1	100105320		Valve Locker	4	70气门锁夹
2	100200691		SpRing,Seat	2	ZY150气门弹簧座(上)
3	100200726		Inner SpRing,Assy	2	ZY150气门内外弹簧组合
4	100105334		Seal Valve Stem	2	70挡油罩组合
5	100200702		Outer Valve SpRing,Retainer	2	ZY150气门弹簧座圈(下)
6	100061495		Exhaust Valve	1	W190排气门
7	100061496		Intake Valve	1	W190进气门
8	100061498		Centrifugal Mass Ass	1	W190减压阀用块组合
9	100057814		Decompression SpRing,Of Camshaft	1	DT190减压阀复位弹簧(2#)
10	100010837-0002		Bolt, M6x16	2	GB70.1螺栓M6x16(兰白锌)
11	100057815		Limit Plate Reducing Valve	1	DT190减压阀限位板(2#)
12	100105059		Timing Driven Sprocket	1	DT190正时从动链轮(2# 34齿 带减压阀)
13	100061326		Gamp Shaft Comp	1	W190凸轮轴部件(带减压阀 轴承6001Z, 61906)
14	100200333		Rocker Arm Parts	2	ZY150摇臂组合(螺栓 螺母 滚轮式)
15	100061404		Rocker Axle Shaft Sleeve	1	W190摇臂轴轴套
16	100061403		Rocker Axle	1	W190摇臂轴(进气)
17	100061402		Rocker Axle	1	W190摇臂轴(排气)
18	100105108		Sprocket Chain	1	VESPA125正时链条组合(5x94 齿形链)

**RIGHT CRANKCASE COVER**



POS.	PART NO	ERP CODE	ENGLISH NAME	QTY	NAME
A	TS0072		Complete Assembly		
1	100032994		Retaining Ring, 20	1	GB893.1挡圈20
2	100100867		Dowel Pin,φ8x12xφ6.3	2	定位销φ8x12xφ6.3
3	100104807		Oil Seal 12x20x5	1	CH125水泵轴油封(12x20x5 AEM)
4	100203079		Pushing Rod Clutch	1	DT115-A离合器推杆
5	100208653		Gasket R.Crankcase Cover	1	W150右曲轴箱盖密封胶垫(不含石棉)
6	100104760		Oil Seal 10x17x5	1	ZS96离合器分离杆油封(10x17x5 T橡胶)
7	100106292-0001		Controlling Arm Assembly Clutch	1	DT190离合器操纵杆组合(兰白锌)
8	100203124		Clutch Controlling Arm Spring	1	CB125离合器操纵杆弹簧
9	100055897-0003		Cover Comp Right Crankcase	1	W190右盖组合(普通款 白板 抛丸钝化)
10	100104740		Oil Seal 26x16x7	1	IB175-FC启动轴油封(26x16x7 T橡胶)
11	100033089-0005		Bolt, M6x90	1	GB16674小盘螺栓M6x90(兰白锌)
12	100011540-0007		Bolt, M6x50	2	GB16674小盘螺栓M6x50(兰白锌)
13	100011536-0002		Bolt, M6x30	2	GB16674小盘螺栓M6x30(兰白锌)
14	100101320		Oil Lelve Sight Window	1	CG125D三气门头盖机油观察窗
15	100203112-0001		Holder Clutch Cable	1	DT190离合器钢索支架(兰白锌)
16	100100015		SpRing,Oil Fine Filter	1	ZS96精密滤器弹簧
17	100200036		Oil Filter	1	DT190机油滤器部件
18	100011546-0001		Bolt, M6x115	1	GB16674小盘螺栓M6x115(兰白锌)
19	100011540-0001		Bolt, M6x60	2	GB16674小盘螺栓M6x60(兰白锌)
20	100031588		O-Ring, φ38.6x2.6	1	O型圈(φ38.6x2.6 T橡胶)
21	100204438-0002		Cap Oil Filter	1	DT190机油滤器盖(抛丸钝化)
22	100011531-0007		Bolt, M6x18	2	GB16674小盘螺栓M6x18(兰白锌)
23	100062064		Oil Cooler Comp	1	CB125D油冷平面密封胶油冷器部件(9#)
24	100104873		Oil Ruler Assy	1	70机油尺组合(整体式 白板 本色)
25	100106178		Washer,φ10x1xφ14	12	平垫圈(φ10x1xφ14)
26	100201818		Furel Pipe	1	DT190外接油管
27	100100347-0001		Bolt,M10x1.25	4	ZS96缸头油管接头螺栓M10x1.25(兰白锌)
28	100201806		Oilpipe Assy	2	W140平面密封胶进油管组合(L:340)

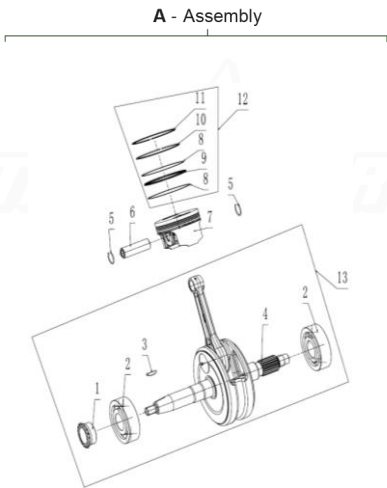
**LEFT CRANKCASE COVER**



POS.	PART NO	ERP CODE	ENGLISH NAME	QTY	NAME
A	TS0073		Complete Assembly		
1	100301454		Screw	6	W120离合器螺钉(4x15)
2	100107948		Clutch Driven Gear Cover	1	C100离合器从动齿轮盖板
3	100107896		Clutch Dash Pot Slipcover	6	C100离合器缓冲套
4	100057812		Gear	1	DT190从动齿
5	100057811		Outer Cover	1	DT190离合器外罩(2#)
6	100103340		Washer	1	C100离合器花键垫圈
7	100103350		Fixing Ring, Clutch	1	C100离合器定位环
8	100301365		Pressure Plate Clutch	1	DT190离合器压盘
9	100103413		Drive Friction Disk	6	CB125离合器主动摩擦片
10	100103420		Outer Friction Disc A	5	B125离合器从动摩擦片
11	100301331		Center Sleeve Clutch	1	DT190离合器中心套
12	100103344		Dish Washer,Clutch	1	C100离合器碟形垫圈
13	100100514		Lock Nut Clutch	2	C100离合器锁紧螺母M14x1
14	100103393		Spring, Clutch	4	W150离合器弹簧
15	100301352		End Cover Clutch	1	DT190离合器端盖
16	100011267-0003		Bolt, M6X22	4	GB5789螺栓M6x22(兰白锌)
17	100031716		BeaRing 6000	1	轴承(6000)
18	100062659		Clutch Assembly	1	DT190离合器总成(3# 不含零件 不带轴承 不带形码)
19	100103481		Primary Drive Gear	1	W100主动齿
20	100202891		Dish Washer,Clutch	1	泰125离合器碟形垫圈(14x2.8x26)

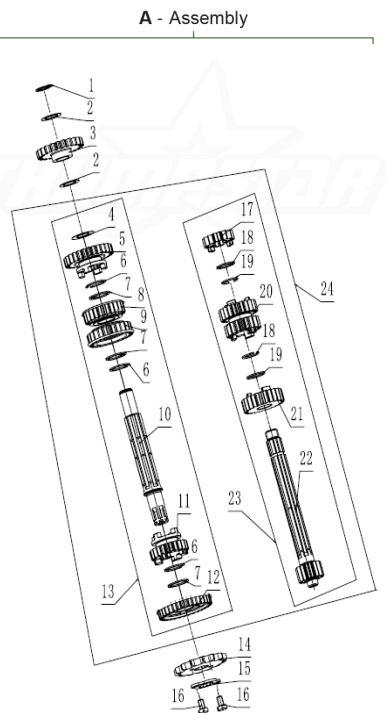


**CRANKSHAFT CONNECTING-ROD ASSY/PISTO**



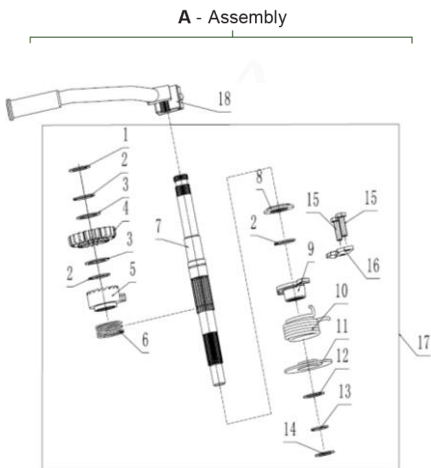
POS.	PART NO	ERP CODE	ENGLISH NAME	QTY	NAME
A	TS0077		Complete Assembly		
1		100303132	Hub Dump Chain Sprocket	1	DT190正时主动链轮
2		100101108	Bearing (63/22P63)	2	轴承(63/22/P63)
3		100100639	Semicircular Key	1	70半圆键
4		100071511	Connecting Rod Comp	1	W190曲轴连杆杆组合
5		100100584	Check Ring Piston Pin	2	GS125活塞销挡圈
6		100101535	Pin, Piston	1	DT190活塞销
7		100061500	Piston	1	W190活塞
8		100071537	Oil Loop	2	DT190油环
9		100071538	Oil Ring	1	DT190衬环
10		100067475	Piston Loop	1	DT190活塞环二(镀铬)
11		100067474	Piston Loop	1	DT190活塞环一(PVD)
12		100064591	Piston Ring, Comp	1	DT190活塞环总成(一环PVD)
13		100056263	Crankshaft Connecting-Rod Assy	1	W190曲轴连杆杆部件

**TRANSMISSION MAIN,COUNTER SHAFT**



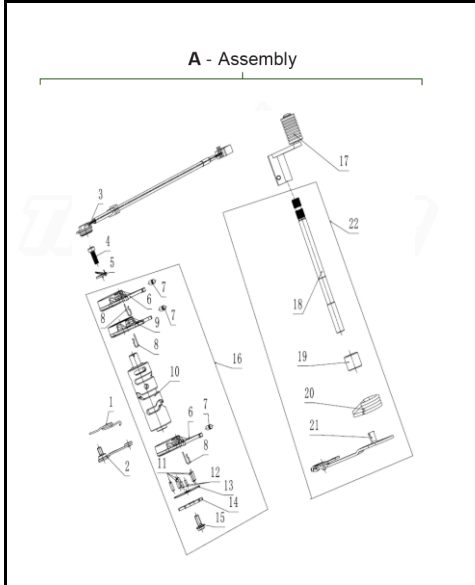
POS.	PART NO	ERP CODE	ENGLISH NAME	QTY	NAME
A	TS0078		Complete Assembly		
1		100011097	Retaining Ring, 15	1	GB894.1挡圈15(轴径15_内径13.8)
2		100106417	Washer, φ15.2x0.5xφ23	2	平垫圈(φ15.2x0.5xφ23_彩锌)
3		100103783	Gear	1	DT190启动过桥齿轮
4		100300794	Washer, φ15.2x0.5xφ26	1	DT190副轴垫圈15.2x0.5x26
5		100062010	Countershaft Second Gear	1	W190副轴二档齿轮
6		100100628	Check Ring, φ18.5	3	W100副轴齿轮挡圈
7		100304548	Washer	3	W100副轴齿轮隔圈(φ17.3x1.2xφ24)
8		100062012	Countershaft Four Speed Gear	1	W190副轴四档齿轮
9		100062011	Countershaft Third Gear	1	W190副轴三档齿轮
10		100062020	Countershaft Dabber	1	W190副轴芯轴
11		100062013	Countershaft Five Speed Gear	1	W190副轴五档齿轮
12		100062009	Countershaft First Gear	1	W190副轴一档齿轮
13		100062019	Countershaft Combination	1	W190副轴组合
14		100103801	Drive Sprocket	1	C100主动链轮(428.15)
15		100203657	Fixing Plate Drive Sprocket	1	70主动链轮固定板
16		100031911-0004	Bolt, M6x10	2	GB5783螺栓M6x10(兰白锌)
17		100062016	Principal Axis Second Gear	1	W190主轴一档齿轮
18		100103645	Washer, 15.5(17.2)x1.2x21	2	70主副轴齿轮隔圈(15.5(17.2)x1.2x21)
19		100103657	Circlip	2	70主轴齿轮卡圈
20		100062017	Principal Axis Three Four Gear	1	W190主轴三(四)档齿轮
21		100062018	Countershaft Five Speed Gear	1	W190主轴五档齿轮
22		100062015	Principal Axis Dabber	1	W190主轴芯轴
23		100062014	Principal Axis Combination	1	W190主轴组合
24		100056260	Advocate Countershaft	1	W190主副轴组合

**KICK STARTING SHAFT ASSEMBLY**



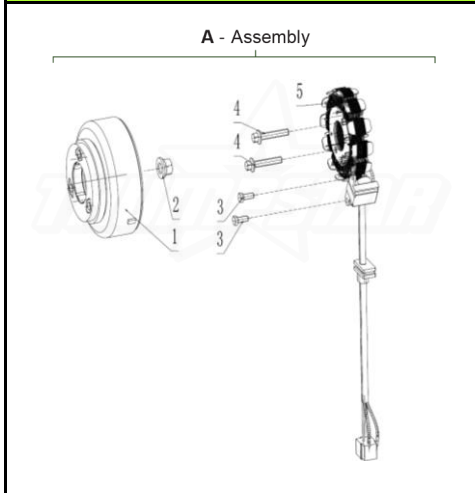
POS.	PART NO	ERP CODE	ENGLISH NAME	QTY	NAME
A	TS0079		Complete Assembly		
1		100106512		1	平垫圈(φ16.1x1xφ24)
2		100100596		3	70启动轴挡圈(φ18.5x1.2xφ22.1)
3		100106524		2	平垫圈(φ20.1x1xφ27)
4		100105775		1	W140启动齿轮
5		100303345		1	W120启动棘轮
6		100105786		1	70启动棘轮弹簧
7		100063242		1	W190启动轴芯轴
8		100105790		1	70弹簧底座
9		100105736		1	70启动轴弹簧座
10		100303320		1	W120启动轴复位弹簧
11		100303317		1	W120启动轴弹簧座
12		100106518		1	平垫圈(φ17.2x1xφ24)
13		100100595		1	70启动轴挡圈(φ15.5x1.2xφ19)
14		100106508		1	平垫圈(φ14.1x1xφ22)
15		100011174	Bolt, M6x20	2	GB5783螺栓M6x20_7级24h
16		100303357		1	W120棘轮导板
17		100061494	Kick Starting Shaft Assembly	1	W190启动轴总成
18		100303421	Start-Up Bar Comp	1	CG125D启动杆部件(QD-88)白铬

**GEARSHIFT MECHANISM**



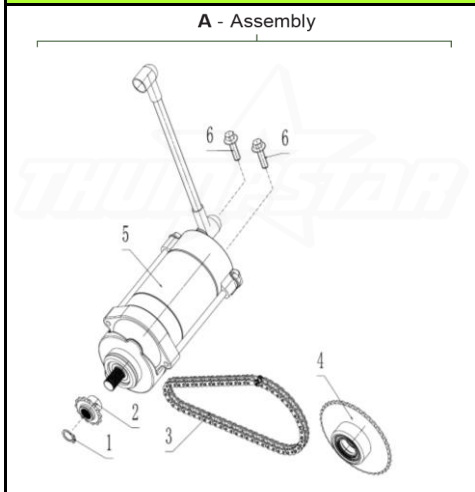
POS.	PART NO	ERP CODE	ENGLISH NAME	QTY	NAME
A	TS0080		Complete Assembly		
1	100203931		SpRing, Locating Plate	1	C100定位板弹簧(2#_国际档)
2	100203961		Locating Plate Assy	1	W120定位板组合
3	100208389-0002		Gearshift Switch Lamp	1	C100档位灯(接口DU211-3.5A_L_450_一根空档)
4	100100466-0001		Screw	1	W150档显螺钉(彩铸)
5	100104486		Contact Cearindication	1	C100档显动触点
6	100062847		Gearshift Fork	2	W190副轴拨叉
7	100100887		Pin, φ3x8.5	3	圆柱销φ3x8.5
8	100103892		Clip, Spring	3	70弹簧夹
9	100062848		Gearshaft Fork	1	W190主轴拨叉
10	100062905		Gearshaft Drum	1	W190变速鼓(五档国际档)
11	100100901		Pin, φ4x13	5	圆柱销φ4x13
12	100100887		Pin, φ3x8.5	2	圆柱销φ3x8.5
13	100203854		Press Plate of Gearshift Drum	1	W100变速鼓压板
14	100062846		Stopping Plate	1	W190五星板(五档国际档)
15	100100419		Bolt M6 x 16	1	变速鼓螺栓(M6x16)
16	100061489		Gearshift Drum Cmp	1	W190变速鼓部件(五档国际档)
17	100204006		GearShift Shaft	1	CG125D变速踏板部件(BT-0V)白铬
18	100071615		Gearshift Shaft Comp	1	70换挡轴芯轴(200)
19	100104000		Sleeve of Gearshift Lever Comp	1	70换挡臂体轴套
20	100103969		Return Slim	1	70换挡回位弹簧
21	100071614		Shift Arm Group	1	70换挡臂体组合
22	100203866		Gearshift Lever Comp	1	70换挡臂部件(四档国际档_200)

**MAGNETO COMP**



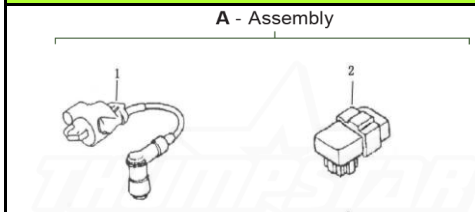
POS.	PART NO	ERP CODE	ENGLISH NAME	QTY	NAME
A	TS0081		Complete Assembly		
1	100062214		Rotor Assy, Magneto	1	C100磁电机转子组合(12V8磁_磁钢壳_高透点火螺帽角20度)
2	100204698-0001		Nut	1	70磁电机螺母(改进型_兰白锌)
3	100011168-0003		Bolt, M5x12	2	GB5783螺栓M5x12(兰白锌)
4	100011534-0002		Bolt, M6x25	2	GB16674小盘螺栓M6x25(兰白锌)
5	100205021-0001		Stator Assy Magneto	1	C100磁电机定子组合(12V8磁_全波交流_接口02_L_340)

**ELECTRIC STARTING MECHANISM**



POS.	PART NO	ERP CODE	ENGLISH NAME	QTY	NAME
A	TS0082		Complete Assembly		
1	100033003		Retaining Ring, 11	1	GB894.1挡圈11(轴径11_内径10.2)
2	100061487		Sprocket	1	W190启动电机小链轮
3	100061493		Starting Motor Drive Chain	1	W190启动链条组合(66节加厚)
4	100062065		Plate Gear Assy	1	C135启动大链轮组件(2#_氟橡胶油封)
5	100061488-0001		Starting Motor Assy	1	W190启动电机(单轴_圆形_510_机座铸化_装配兰白锌)
6	100011533-0005		Bolt, M6x22	2	GB16674小盘螺栓M6x22(兰白锌)

**ELECTRIC**



POS.	PART NO	ERP CODE	ENGLISH NAME	QTY	NAME
A	TS0083		Complete Assembly		
1	100204266-0006		Ignition Coil	1	高压包(MG03B_L_500)
2	100204310		C.D.I.	1	点火器(MD100)
3	100205413		Rectifier	1	整流调压器(MT12V8-ZS05B)
4	100205381		Relay	1	继电器(MQJ10-ZS01A)



