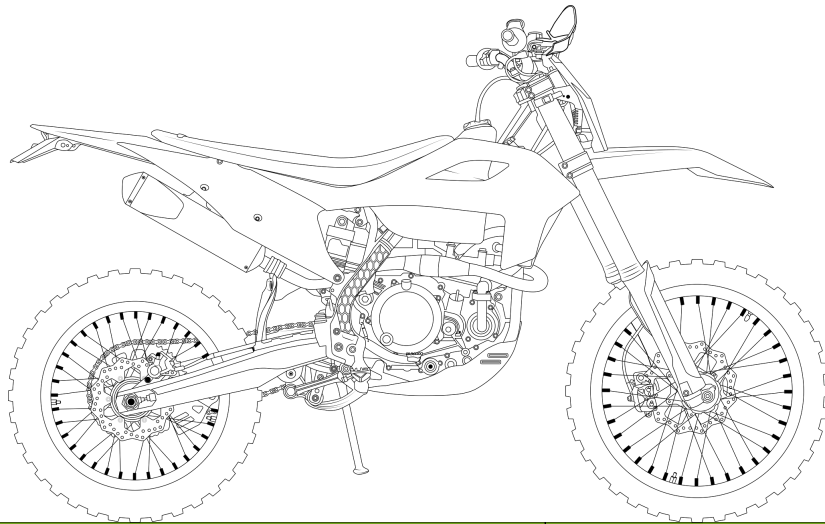
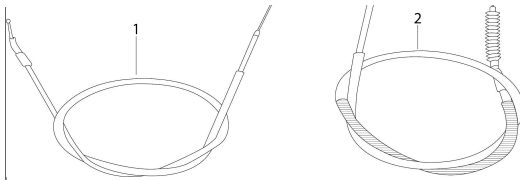


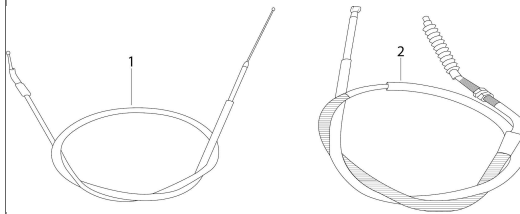
N1 MODELS 250 - 450



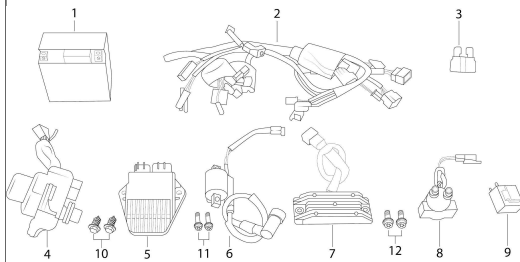
HEADLIGHT		NO.	QTY	CODE	NAME	CHINESE NAME
		1	1	F01-01	HEADLIGHT	前大灯
		2	1	F01-02	HEADLIGHT BULB	大灯灯泡
		3	1	F01-03	FRONT WINKER L	前左转向灯
		4	1	F01-04	FRONT WINKER R	前右转向灯
		5	1	F01-05	REAR WINKER L	后左转向灯
		6	1	F01-06	REAR WINKER R	后右转向灯
		7	1	F01-07	LICENSE LIGHT	牌照灯
		8	1	F01-08	TAILLIGHT	尾灯
HEAD COVER						
<p>HIGHWAY EDITION</p> <p>COMPETITIVE EDITION</p>		NO.	QTY	CODE	NAME	CHINESE NAME
		1	1	F02-01	HEADLIGHT COVER	大灯灯壳
		2	2	F02-02	HEADLIGHT TIE	大灯壳扎带
		3	1	F02-03	LICENCE PLATE	号牌
		4	1	F02-04	CHEST PROTECTOR COTTON	护胸棉
5	1	F02-05	INNER BOLT M6*16	T30 M6*16		
METER						
		NO.	QTY	CODE	NAME	CHINESE NAME
		1	1	F03-01	METER ASSY	仪表总成
		2	1	F03-02	METER BRACKET	仪表支架
		3	2	F03-03	MOUNTING GLUE, METER	花瓣胶
		4	1	F03-04	IGNITION SWITCH BRACKET	点火锁支架
		5	1	F03-05	IGNITION SWITCH	点火锁
		6	1	F03-06	MILEAGE SENSING LINE BRACKET	计速器支架
		7	1	F03-07	MILEAGE SENSING LINE	计速器传感线
		8	2	F03-08	SCREW 4.8*12	ST十字4.8*12
9	2	F03-09	WASHER Ø6	96 Ø6		
SWITCH						
		NO.	QTY	CODE	NAME	CHINESE NAME
1	1	F04-01	L SWITCH	左闸把总成		



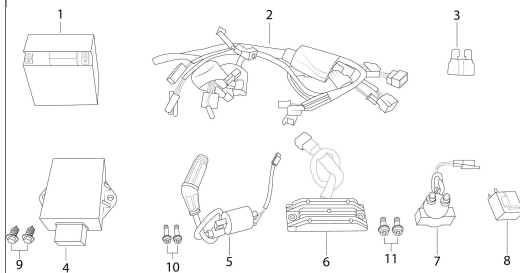
HJ250H-7 CABLE		NO.	QTY	CODE	NAME	CHINESE NAME
1	1	F07-3-01			THROTTLE CABLES	油门拉索
2	1	F07-3-02			CLUTCH CABLES	离合拉索



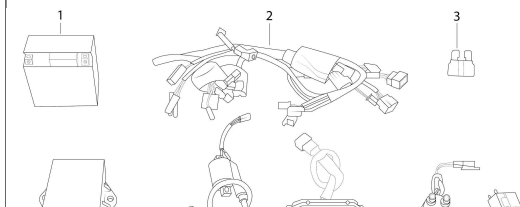
HJ250H-5 ELECTRIC PARTS		NO.	QTY	CODE	NAME	CHINESE NAME
1	1	F08-1-01			BATTERY 12v5L	蓄电池 12v5L
2	1	F08-1-02			MAIN HARNESS	主电线
3	1	F08-1-03			FUSE	保险管
4	1	F08-1-04			ELECTRIC MOTOR	伺服电机
5	1	F08-1-05			CDI	点火器
6	1	F08-1-06			IGNATION COIL	高压包
7	1	F08-1-07			VOLTAGE REGULATOR	调压器
8	1	F08-1-08			STARTING RELAY	继电器
9	1	F08-1-09			FLASHER RELAY	闪光器
10	2	F08-1-10			SCREW 6*16	六角自攻钉6*16
11	2	F08-1-11			INNER BOLT M6*20	T30 M6*20
12	2	F08-1-12			INNER BOLT M6*12	T30 M6*12

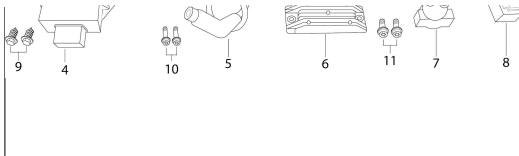


HJ250H-6 ELECTRIC PARTS		NO.	QTY	CODE	NAME	CHINESE NAME
1	1	F08-2-01			BATTERY 12v5L	蓄电池 12v5L
2	1	F08-2-02			MAIN HARNESS	主电线
3	1	F08-2-03			FUSE	保险管
4	1	F08-2-04			CDI	点火器
5	1	F08-2-05			IGNATION COIL	高压包
6	1	F08-2-06			VOLTAGE REGULATOR	调压器
7	1	F08-2-07			STARTING RELAY	继电器
8	1	F08-2-08			FLASHER RELAY	闪光器
9	2	F08-2-09			SCREW 6*16	六角自攻钉6*16
10	2	F08-2-10			INNER BOLT M6*20	T30 M6*20
11	2	F08-2-11			INNER BOLT M6*12	T30 M6*12

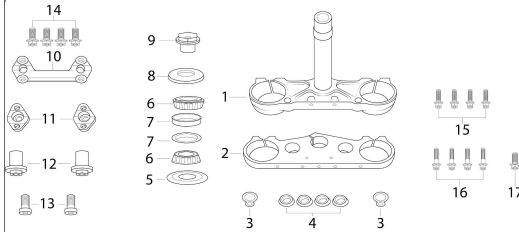


HJ250H-7 ELECTRIC PARTS		NO.	QTY	CODE	NAME	CHINESE NAME
1	1	F08-3-01			BATTERY 12v5L	蓄电池 12v5L
2	1	F08-3-02			MAIN HARNESS	主电线
3	1	F08-3-03			FUSE	保险管
4	1	F08-3-04			CDI	点火器
5	1	F08-3-05			IGNATION COIL	高压包
6	1	F08-3-06			VOLTAGE REGULATOR	调压器
7	1	F08-3-07			STARTING RELAY	继电器
8	1	F08-3-08			FLASHER RELAY	闪光器
9	2	F08-3-09			SCREW 6*16	六角自攻钉6*16
10	2	F08-3-10			INNER BOLT M6*20	T30 M6*20
11	2	F08-3-11			INNER BOLT M6*12	T30 M6*12

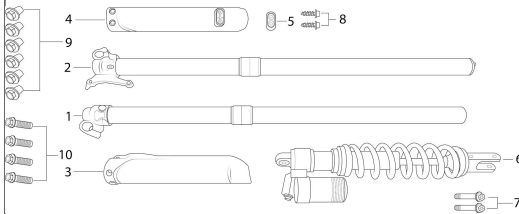




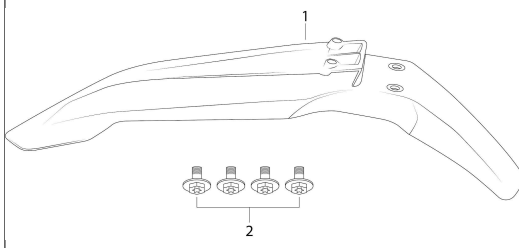
STEERING STEM		NO.	QTY	CODE	NAME	CHINESE NAME
		1	1	F09-01	LOWER PLATE, STEERING STEM	方向柱下联板
		2	1	F09-02	UPPER PLATE, STEERING STEM	方向柱上联板
		3	2	F09-03	Hook	拖车挂钩
		4	4	F09-04	MOUNTING GLUE	卡子卡座连接胶
		5	1	F09-05	DUSTPROOF GASKET, STEERING STEM	方向轴承下防尘垫
		6	2	F09-06	STEERING BEARING	方向锥型轴承
		7	2	F09-07	STEERING BOWL	方向锥型轴承座圈
		8	1	F09-08	PAD, STEERING STEM ADJUSTING NUT	方向轴承上防尘盖
		9	1	F09-09	LOCKED NUT, STEERING STEM	方向柱锁紧螺栓
		10	1	F09-10	UPPER CASSETTE, HANDLE PIPE	手把管卡子
		11	2	F09-11	LOWER CASSETTE, HANDLE PIPE	手把管卡座
		12	2	F09-12	LOWER CASSETTE, HANDLE PIPE BOLT	手把管卡座边接螺栓
		13	2	F09-13	INNER BOLT M10*35	T40圆头M10*35
		14	4	F09-14	INNER BOLT M8*25	T40 M8*25
		15	4	F09-15	INNER BOLT M8*40	T40 M8*40
		16	4	F09-16	INNER BOLT M8*50	T40 M8*50
		17	1	F09-17	INNER BOLT M8*25	T40 M8*25



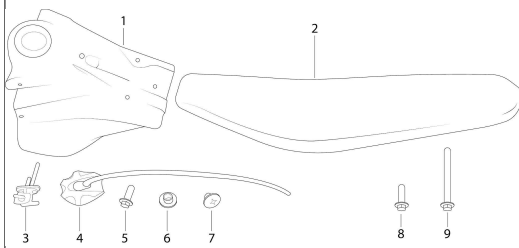
FRONT SHOCK ABSORBER		NO.	QTY	CODE	NAME	CHINESE NAME
		1	1	F10-01	R, FRONT SHOCK ABSORBER	前右减震
		2	1	F10-02	L, FRONT SHOCK ABSORBER	前左减震
		3	1	F10-03	R SHIELD, FRONT SHOCK ABSORBER	前减护罩右
		4	1	F10-04	L SHIELD, FRONT SHOCK ABSORBER	前减护罩左
		5	1	F10-05	CLIP, FRONT BRAKE OIL PIPE	前减护罩油管卡子
		6	1	F10-06	REAR SHOCK ABSORBER	后中心减震
		7	2	F10-07	INNER BOLT M10*55	T40 M10*55
		8	2	F10-08	SCREW 6*16	ST六角6*16
		9	6	F10-09	BOLT 6*10	5787台阶6*10
		10	4	F10-10	INNER BOLT M8*25	T40 M8*25



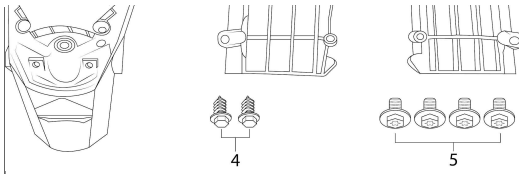
FRONT FENDER		NO.	QTY	CODE	NAME	CHINESE NAME
		1	1	F11-01	FRONE FENDER	前挡泥板
		2	4	F11-02	INNER BOLT M6*16	T30带盘M6*16



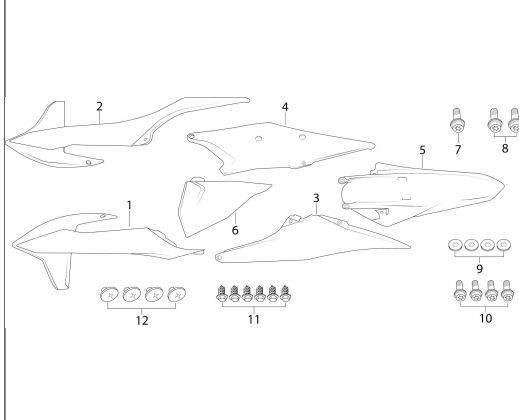
FUEL TANK / SEAT		NO.	QTY	CODE	NAME	CHINESE NAME
		1	1	F12-01	FUEL TANK	油箱
		2	1	F12-02	FUEL TANK	大油箱
		3	1	F12-03	SEAT	座垫
		4	1	F12-04	FUEL COCK	油开关
		5	1	F12-05	CAP, FUEL TANK	油箱盖
		6	1	F12-06	INNER BOLT M6*20	T30 M6*20
		7	1	F12-07	T BUSHING Φ6*Φ18*10	翻边衬套Φ6*Φ18*10
		8	1	F12-08	SCREW M6*8	十字大扁头台阶M6*8
		9	1	F12-09	BOLT M6*16	T30 M6*16
		10	1	F12-10	BOLT M6*108	T30 M6*108



HJ250H-5 MUFFLER		NO.	QTY	CODE	NAME	CHINESE NAME
		1	1	F13-1-01	FRONT PARTS, MUFFLER	消声器前段
		2	1	F13-1-02	REAR PARTS, MUFFLER	消声器后段
		3	1	F13-1-03	GASKET, MUFFLER	消声器密封圈
		4	1	F13-1-04	RUBBER BUSHING	工字胶
		5	1	F13-1-05	MUFFLER MOUNTING GLUE	消声器连接胶
		6	2	F13-1-06	NUT M8*23	923盖型螺母M8*23
		7	1	F13-1-07	NUT M8	6177 M8
		8	1	F13-1-08	WASHER Φ8	96 Φ8
		9	2	F13-1-09	INNER BOLT M8*20	T40圆头M8*20
		10	2	F13-1-10	INNER BOLT M8*35	T40 M8*35
HJ250H-6 MUFFLER		NO.	QTY	CODE	NAME	CHINESE NAME
		1	1	F13-2-01	FRONT PARTS, MUFFLER	消声器前段
		2	1	F13-2-02	REAR PARTS, MUFFLER	消声器后段
		3	1	F13-2-03	GASKET, MUFFLER	消声器密封圈
		4	2	F13-2-04	NUT M8*23	923盖型螺母M8*23
		5	1	F13-2-05	NUT M8	6177 M8
		6	1	F13-2-06	WASHER Φ8	96 Φ8
		7	1	F13-2-07	INNER BOLT M8*20	T40圆头M8*20
		8	2	F13-2-08	INNER BOLT M8*35	T40 M8*35
HJ250H-7 MUFFLER		NO.	QTY	CODE	NAME	CHINESE NAME
		1	1	F13-3-01	FRONT PARTS, MUFFLER	消声器前段
		2	1	F13-3-02	MIDDLE PARTS, MUFFLER	消声器中段
		3	1	F13-3-03	REAR PARTS, MUFFLER	消声器后段
		4	1	F13-3-04	GASKET, MUFFLER	消声器密封圈
		5	2	F13-3-05	WASHER Φ8	97 Φ8
		6	2	F13-3-06	BOLT M8*20	5783 M8*20
		7	1	F13-3-07	NUT M8	6177 M8
		8	1	F13-3-08	WASHER Φ8	96 Φ8
		9	1	F13-3-09	INNER BOLT M8*20	T40圆头M8*20
		10	2	F13-3-10	INNER BOLT M8*35	T40 M8*35
HJ250H-5 AIR CLEANER		NO.	QTY	CODE	NAME	CHINESE NAME
		1	1	F14-1-01	REWIND BAO	进气管回气包
		2	1	F14-1-02	INLET PIPE	进气管
		3	1	F14-1-03	HOSE	水箱液流管
		4	1	F14-1-04	CARBURATOR	化油器
		5	1	F14-1-05	AIR FILTER CONNECTING PIPE	空滤器喉管
		6	1	F14-1-06	AIR FILTER ELEMENTS BRACKET	空滤器泡沫支架
		7	1	F14-1-07	AIR FILTER ELEMENTS	空滤器泡沫
		8	1	F14-1-08	AIR FILTER HOLDER	喉管卡子
HJ250H-6 AIR CLEANER		NO.	QTY	CODE	NAME	CHINESE NAME
		1	1	F14-2-01	INLET PIPE	进气管
		2	1	F14-2-02	CARBURATOR	化油器
		3	1	F14-2-03	AIR FILTER CONNECTING PIPE	空滤器喉管
		4	1	F14-2-04	AIR FILTER ELEMENTS BRACKET	空滤器泡沫支架

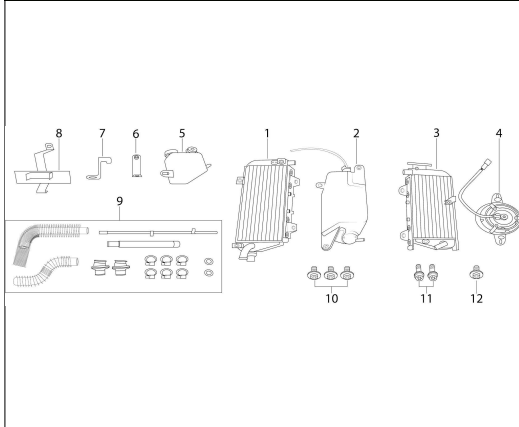


SIDE CAP / REAR COVER



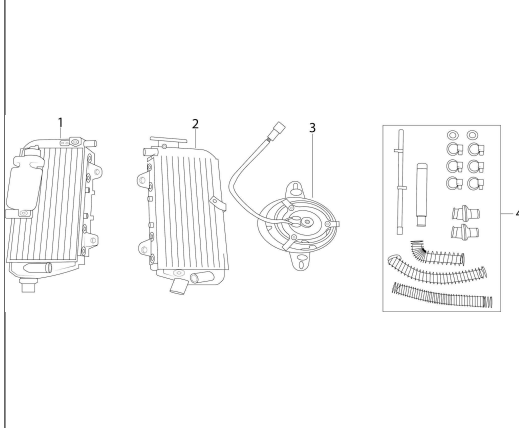
NO.	QTY	CODE	NAME	CHINESE NAME
1	1	F18-01	L PROTECTING BOARD, FUEL TANK	油箱左护板
2	1	F18-02	R PROTECTING BOARD, FUEL TANK	油箱右护板
3	1	F18-03	R SIDE COVER	右车体
4	1	F18-04	L SIDE COVER	左车体
5	1	F18-05	TAIL COVER	后尾盖
6	1	F18-06	AIR CLEANER COVER	空气滤器盖
7	1	F18-07	INNER BOLT M6*20	T30 M6*20
8	2	F18-08	INNER BOLT M6*16	T30 M6*16
9	4	F18-09	WASHER Φ6	96 Φ6
10	4	F18-10	INNER BOLT M6*12	T30 M6*12
11	6	F18-11	SCREW 6*16	ST六角*16
12	4	F18-12	SCREW M6*8	十字大扁头台阶M6*8

HJ250H-5 WATER TANK



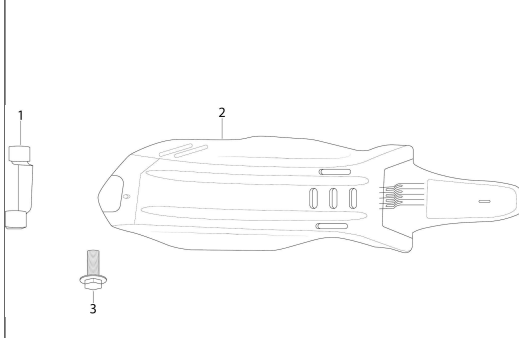
NO.	QTY	CODE	NAME	CHINESE NAME
1	1	F19-1-01	WATER TANK,L	左水箱
2	1	F19-1-02	OIL VESSEL	机油壶
3	1	F19-1-03	WATER TANK,R	右水箱
4	1	F19-1-04	ELECTRIC FAN	风扇
5	1	F19-1-05	VESSEL	水壶
6	1	F19-1-06	VESSEL BRACKET UP	水壶支架上
7	1	F19-1-07	BATTERY LOCATING PLATE	电瓶压板
8	1	F19-1-08	WATER TANK ATTACH	水箱附件
9	1	F19-1-09	INNER BOLT M6*16	T30带盘M6*16
10	3	F19-1-10	INNER BOLT M6*16	T30 M6*16
11	2	F19-1-11	INNER BOLT M6*16	T30 M6*16
12	1	F19-1-12	INNER BOLT M6*16	T30 M6*16

HJ250H-6 WATER TANK



NO.	QTY	CODE	NAME	CHINESE NAME
1	1	F19-2-01	WATER TANK,L	左水箱
2	1	F19-2-02	WATER TANK,R	右水箱
3	1	F19-2-03	ELECTRIC FAN	风扇
4	1	F19-2-04	WATER TANK ATTACH	水箱附件

ENGINE GUARD PLATE



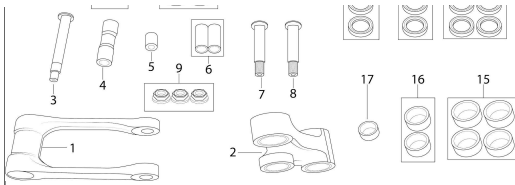
NO.	QTY	CODE	NAME	CHINESE NAME
1	1	F20-01	GUARD PLATE, ENGINE FRONT BRACKET	发动机保护板前支架
2	1	F20-02	GUARD PLATE, ENGINE	发动机保护板
3	1	F20-03	BOLT M6*30	5787 M6*30

HJ250H-5 REAR BRAKE PEDAL				
NO.	QTY	CODE	NAME	CHINESE NAME
1	1	F21-1-01	SIDE STAND	侧支架
2	1	F21-1-02	START LEVER	启动杆
3	1	F21-1-03	L, FRONT FOOTREST	左脚蹬
4	1	F21-1-04	R, FRONT FOOTREST	右脚蹬
5	1	F21-1-05	GEARSHIFT ARM	换挡杆
6	1	F21-1-06	REAR BRAKE	刹车臂
7	1	F21-1-07	REAR BRAKE PEDAL	刹车踏板
8	1	F21-1-08	RETURN SPRING, REAR BRAKE PEDAL	刹车臂回位簧
9	1	F21-1-09	REAR BRAKE BRACKET	刹车臂回位支架
10	2	F21-1-10	BEARING	刹车臂轴承
11	1	F21-1-11	SIDE STAND SPRING	侧支架回位簧
12	1	F21-1-12	HANGING BOARD, RETURN SPRING	侧支架挂钩
13	1	F21-1-13	BOLT H M6*16	H5台阶 M6*16
14	1	F21-1-14	NUT M10	自锁螺帽M10
15	1	F21-1-15	BOLT	侧支架螺栓
16	1	F21-1-16	INNER BOLT M8*20	T40圆头M8*20
17	1	F21-1-17	SIDE STAND BUSHING	侧支架限位衬套
18	2	F21-1-18	INNER BOLT M5*12 STAINLESS STEEL	T25不锈钢M5*12
19	1	F21-1-19	INNER BOLT M6*20	T30 M6*20
20	1	F21-1-20	NUT M6	6177 M6
21	1	F21-1-21	BOLT M8*20	5783 M8*20
22	1	F21-1-22	INNER BOLT M10*40	T40圆头M10*40
23	1	F21-1-23	NUT M10	6177 M10

HJ250H-6 REAR BRAKE PEDAL				
NO.	QTY	CODE	NAME	CHINESE NAME
1	1	F21-2-01	SIDE STAND	侧支架
2	1	F21-2-02	START LEVER	启动杆
3	1	F21-2-03	L, FRONT FOOTREST	左脚蹬
4	1	F21-2-04	R, FRONT FOOTREST	右脚蹬
5	1	F21-2-05	GEARSHIFT ARM	换挡杆
6	1	F21-2-06	REAR BRAKE	刹车臂
7	1	F21-2-07	REAR BRAKE PEDAL	刹车踏板
8	1	F21-2-08	RETURN SPRING, REAR BRAKE PEDAL	刹车臂回位簧
9	1	F21-2-09	REAR BRAKE BRACKET	刹车臂回位支架
10	2	F21-2-10	BEARING	刹车臂轴承
11	1	F21-2-11	SIDE STAND SPRING	侧支架回位簧
12	1	F21-2-12	HANGING BOARD, RETURN SPRING	侧支架挂钩
13	1	F21-2-13	BOLT H M6*16	H5台阶 M6*16
14	1	F21-2-14	NUT M10	自锁螺帽M10
15	1	F21-2-15	BOLT	侧支架螺栓
16	1	F21-2-16	INNER BOLT M8*20	T40圆头M8*20
17	1	F21-2-17	SIDE STAND BUSHING	侧支架限位衬套
18	2	F21-2-18	INNER BOLT M5*12 STAINLESS STEEL	T25不锈钢M5*12
19	1	F21-2-19	INNER BOLT M6*20	T30 M6*20
20	1	F21-2-20	NUT M6	6177 M6
21	1	F21-2-21	BOLT M8*20	5783 M8*20
22	1	F21-2-22	INNER BOLT M10*40	T40圆头M10*40
23	1	F21-2-23	NUT M10	6177 M10

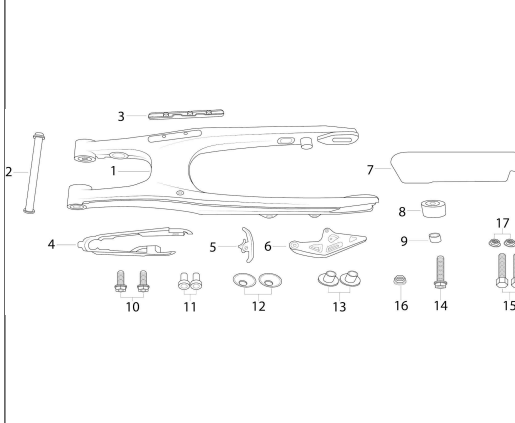
HJ250H-7 REAR BRAKE PEDAL				
NO.	QTY	CODE	NAME	CHINESE NAME
1	1	F21-3-01	SIDE STAND	侧支架
2	1	F21-3-02	START LEVER	启动杆
3	1	F21-3-03	L, FRONT FOOTREST	左脚蹬
4	1	F21-3-04	R, FRONT FOOTREST	右脚蹬
5	1	F21-3-05	GEARSHIFT ARM	换挡杆
6	1	F21-3-06	REAR BRAKE	刹车臂
7	1	F21-3-07	REAR BRAKE PEDAL	刹车踏板
8	1	F21-3-08	RETURN SPRING, REAR BRAKE PEDAL	刹车臂回位簧
9	1	F21-3-09	REAR BRAKE BRACKET	刹车臂回位支架
10	2	F21-3-10	BEARING	刹车臂轴承
11	1	F21-3-11	SIDE STAND SPRING	侧支架回位簧
12	1	F21-3-12	HANGING BOARD, RETURN SPRING	侧支架挂钩
13	1	F21-3-13	BOLT H M6*16	H5台阶 M6*16
14	1	F21-3-14	NUT M10	自锁螺帽M10
15	1	F21-3-15	BOLT	侧支架螺栓
16	1	F21-3-16	INNER BOLT M8*20	T40圆头M8*20
17	1	F21-3-17	SIDE STAND BUSHING	侧支架限位衬套
18	2	F21-3-18	INNER BOLT M5*12 STAINLESS STEEL	T25不锈钢M5*12
19	1	F21-3-19	INNER BOLT M6*20	T30 M6*20
20	1	F21-3-20	NUT M6	6177 M6
21	1	F21-3-21	BOLT M8*20	5783 M8*20
22	1	F21-3-22	INNER BOLT M10*40	T40圆头M10*40
23	1	F21-3-23	NUT M10	6177 M10

CRADLE ASSEMBLY				
NO.	QTY	CODE	NAME	CHINESE NAME
1	1	F22-01	ROCKER	摇臂
2	1	F22-02	CRADLE ASSY	摇架
3	1	F22-03	ROCKER ARM SHAFT	摇臂轴
4	1	F22-04	CRADLE BUSHING	摇臂衬套
5	1	F22-05	CRADLE BUSHING SHORT	摇架衬套短
6	2	F22-06	CRADLE BUSHING LONG	摇架衬套长
7	1	F22-07	CRADLE ARM SHAFT LIMIT	摇架轴带限位



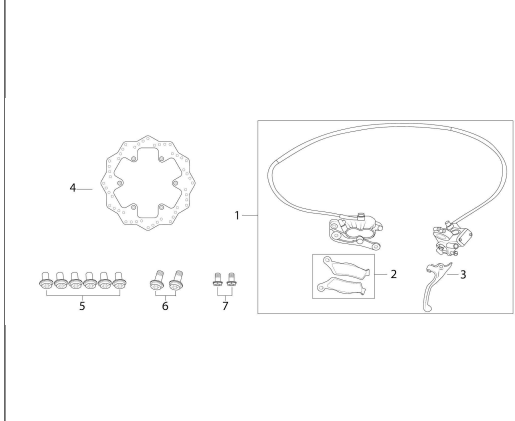
8	1	F22-08	CRADLE ARM SHAFT	摇架轴
9	3	F22-09	NUT M14	6187 M14
10	2	F22-10	DOST COVER SMALL	摇架轴防尘盖小
11	4	F22-11	DOST COVER BIG	摇架轴防尘盖大
12	2	F22-12	OIL SEAL 25*32*7	摇架油封25*32*7
13	2	F22-13	OIL SEAL 24*32*7	摇架油封24*32*7
14	4	F22-14	OIL SEAL 22*32*7	摇架油封22*32*7
15	4	F22-15	NEEDLE BEARING HK1816	滚针轴承HK1816
16	2	F22-16	NEEDLE BEARING HK2016	滚针轴承HK2016
17	1	F22-17	NEEDLE BEARING HK2216	滚针轴承HK2216

REAR FORK		NO.	QTY	CODE	NAME	CHINESE NAME
-----------	--	-----	-----	------	------	--------------



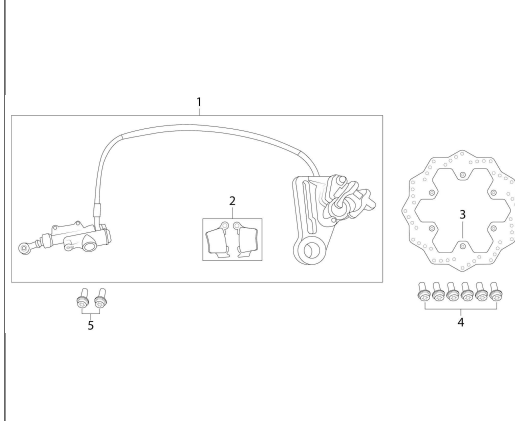
1	1	F23-01	REAR FORK	平叉
2	1	F23-02	REAR FORK PIVOT	平叉轴
3	1	F23-03	TUBING SUPPORT	油管卡胶
4	1	F23-04	CHAIN GUARD	链条护卡
5	1	F23-05	CHAIN TENSIONING	链条压紧胶
6	1	F23-06	CHAIN GUIDE	导链盒
7	1	F23-07	CHAIN	链条
8	1	F23-08	CHAIN TENSIONING PULLEY	链条导向轮
9	1	F23-09	BUSHING	衬套
10	2	F23-10	INNER BOLT M6*12	T30 M6*12
11	2	F23-11	INNER BOLT M6*16	H6 M6*16
12	2	F23-12	WASHER Φ6	锥型铁块Φ6
13	2	F23-13	T BUSHING Φ6*Φ18*10	翻边衬套Φ6*Φ18*10
14	1	F23-14	INNER BOLT M8*50	T40 M8*50
15	2	F23-15	ADJUSTER BOLT	链条调节螺丝
16	1	F23-16	NUT M8	6177 M8
17	2	F23-17	NUT M8 STAINLESS STEEL	6177 M8不锈钢

FRONT BRAKE		NO.	QTY	CODE	NAME	CHINESE NAME
-------------	--	-----	-----	------	------	--------------



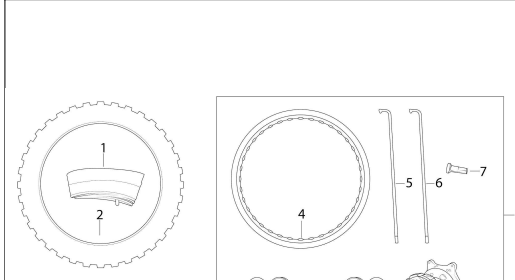
1	1	F24-01	FRONT LIQUID PRESS ASSY	前碟刹泵总成
2	1	F24-02	FRONT BRAKE SHOE COMBINATION	前碟刹刹车片
3	1	F24-03	FRONT BRAKE LEVER	前刹手柄
4	1	F24-04	FRONT BRAKE DISC	前碟刹盘
5	6	F24-05	INNER BOLT M6*16	T30 M6*16
6	2	F24-06	INNER BOLT M8*25	T40 M8*25
7	2	F24-07	INNER BOLT M6*20	T30 M6*20

REAR BRAKE		NO.	QTY	CODE	NAME	CHINESE NAME
------------	--	-----	-----	------	------	--------------

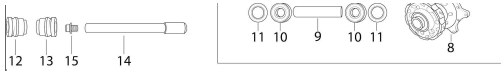


1	1	F25-01	REAR LIQUID PRESS ASSY	后碟刹泵总成
2	1	F25-02	REAR BRAKE SHOE COMBINATION	后碟刹刹车片
3	1	F25-03	REAR BRAKE DISC	后碟刹盘
4	6	F25-04	INNER BOLT M6*16	T30 M6*16
5	2	F25-05	INNER BOLT M6*20	T30 M6*20

FRONT WHEEL		NO.	QTY	CODE	NAME	CHINESE NAME
-------------	--	-----	-----	------	------	--------------

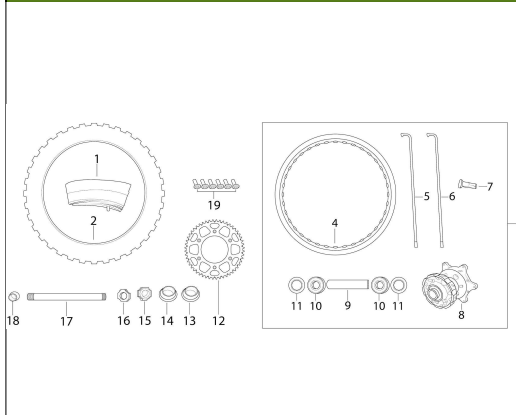


1	1	F26-01	TUBE, FRONT WHEEL	前轮内胎
2	1	F26-02	TYRE, FRONT WHEEL	前轮外胎
3	1	F26-03	FRONT WHEEL RIM COMBINATION	前轮网总成
4	1	F26-04	FRONT WHEEL RIM	前轮圈
5	18	F26-05	FRONT WHEEL IN SPOKE	前轮内辐条
6	18	F26-06	FRONT WHEEL OUTSIDE SPOKE	前轮外辐条
7	36	F26-07	NUT, FRONT WHEEL SPOKE	辐条螺帽
8	1	F26-08	FRONT HUB	前轮毂
9	1	F26-09	FRONT WHEEL IN BUSHING	前轮内衬套
10	2	F26-10	BEARING, FRONT HUB	前轮毂轴承
11	2	F26-11	OIL SEAL, FRONT HUB	前轮毂油封
12	1	F26-12	L BUSHING, FRONT WHEEL	前轮左衬套
13	1	F26-13	R BUSHING, FRONT WHEEL	前轮右衬套



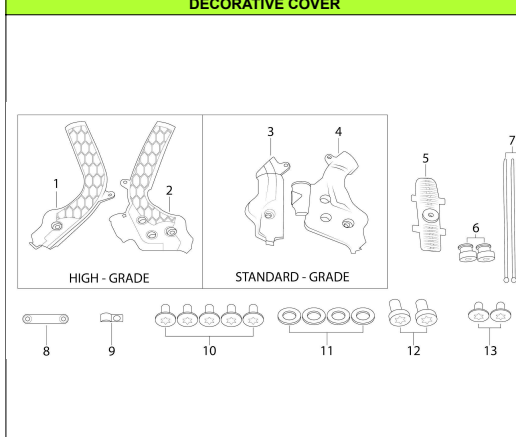
14	1	F26-14	FRONT AXLE	前轮轴
15	1	F26-15	FRONT AXLE NUT	前轮轴螺帽

REAR WHEEL		NO.	QTY	CODE	NAME	CHINESE NAME
------------	--	-----	-----	------	------	--------------



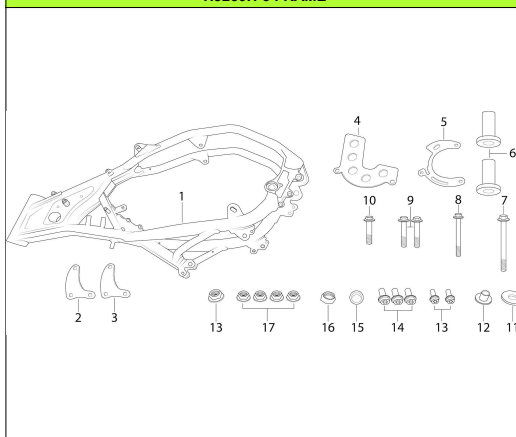
1	1	F27-01	TUBE, REAR WHEEL	后轮内胎
2	1	F27-02	TYRE, REAR WHEEL	后轮外胎
3	1	F27-03	REAR WHEEL RIM COMBINATION	后轮网总成
4	1	F27-04	REAR WHEEL RIM	后轮圈
5	18	F27-05	REAR WHEEL IN SPOKE	后轮内辐条
6	18	F27-06	REAR WHEEL OUTSIDE SPOKE	后轮外辐条
7	36	F27-07	NUT, REAR WHEEL SPOKE	辐条螺帽
8	1	F27-08	REAR HUB	后轮毂
9	1	F27-09	REAR WHEEL IN BUSHING	后轮内衬套
10	2	F27-10	BEARING, REAR HUB	后轮毂轴承
11	2	F27-11	OIL SEAL, REAR HUB	后轮毂油封
12	1	F27-12	CHAIN DISC	后链轮
13	1	F27-13	L BUSHING, REAR WHEEL	后轮左衬套
14	1	F27-14	R BUSHING, REAR WHEEL	后轮右衬套
15	1	F27-15	CHAIN ADJUSTER L	链条调节器左
16	1	F27-16	CHAIN ADJUSTER R	链条调节器右
17	1	F27-17	REAR AXLE	后轮轴
18	1	F27-18	FRONT AXLE NUT	后轮轴螺帽
19	6	F27-19	INNER BOLT M6*20	T30 M6*20

DECORATIVE COVER		NO.	QTY	CODE	NAME	CHINESE NAME
------------------	--	-----	-----	------	------	--------------



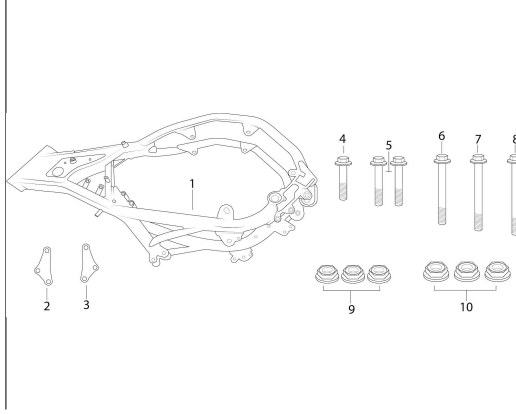
1	1	F28-01	L FRAME SHIELD (HIGH-GRADE)	左车架保护罩 (高配)
2	1	F28-02	R FRAME SHIELD (HIGH-GRADE)	右车架保护罩 (高配)
3	1	F28-03	L FRAME SHIELD (STANDARD-GRADE)	左车架保护罩 (标配)
4	1	F28-04	R FRAME SHIELD (STANDARD-GRADE)	右车架保护罩 (标配)
5	1	F28-05	FUEL UPPER TANK MOUNTING GLUE	油箱上胶
6	2	F28-06	FUEL LOWER TANK MOUNTING GLUE	油箱下胶
7	3	F28-07	TIE	扎带
8	1	F28-08	WIRE HARNESSASSY CLIP	主线线卡
9	1	F28-09	THROTTLE CABLES CLIP	油门线卡
10	5	F28-10	INNER BOLT M5*12 STAINLESS STEEL	T25不锈钢M5*12
11	4	F28-11	WASHER Φ6	96 Φ6
12	2	F28-12	INNER BOLT M8*20	T40圆头M8*20
13	2	F28-13	INNER BOLT M6*12	T30 M6*12

HJ250H-5 FRAME		NO.	QTY	CODE	NAME	CHINESE NAME
----------------	--	-----	-----	------	------	--------------



1	1	F29-1-01	FRAME	车架
2	1	F29-1-02	L UPPER SUSPENSION PLATE, ENGINE	发动机上悬挂左
3	1	F29-1-03	R UPPER SUSPENSION PLATE, ENGINE	发动机上悬挂右
4	1	F29-1-04	COVE CHAIN CASE	发动机后尾盖
5	1	F29-1-05	LINE CARD	发动机压线板
6	2	F29-1-06	REAR FORK IN BUSHING	平叉内衬套
7	1	F29-1-07	BOLT 10*120	5787 10*120
8	1	F29-1-08	BOLT 8*75	5787 8*75
9	2	F29-1-09	BOLT 8*60	5787 8*60
10	1	F29-1-10	BOLT 8*45	5787 8*45
11	1	F29-1-11	WASHER Φ6	96 Φ6
12	1	F29-1-12	T BUSHING Φ6*Φ18*10	翻边衬套Φ6*Φ18*10
13	2	F29-1-13	BOLT 6*12	5787 6*12
14	3	F29-1-14	BOLT 6*10	5787 6*10
15	1	F29-1-15	BUSHING	衬套
16	1	F29-1-16	NUT M10	自锁螺帽 M10
17	4	F29-1-17	NUT M8	6177 M8
18	1	F29-1-18	NUT M10	6187 M10

HJ250H-6 FRAME		NO.	QTY	CODE	NAME	CHINESE NAME
----------------	--	-----	-----	------	------	--------------



1	1	F29-2-01	FRAME	车架
2	1	F29-2-02	R UPPER SUSPENSION PLATE, ENGINE	发动机上悬挂右
3	1	F29-2-03	L UPPER SUSPENSION PLATE, ENGINE	发动机上悬挂左
4	1	F29-2-04	BOLT 8*60	5787 8*60
5	2	F29-2-05	BOLT 8*65	5787 8*65
6	1	F29-2-06	BOLT 10*100	5787 10*100
7	1	F29-2-07	BOLT 8*120	5787 8*120
8	1	F29-2-08	BOLT 10*130	5787 10*130
9	3	F29-2-09	NUT M8	6177 M8
10	3	F29-2-10	NUT M10	6177 M10

HJ250H-7 FRAME		NO.	QTY	CODE	NAME	CHINESE NAME
		1	1	F29-3-01	FRAME	车架
		2	1	F29-3-02	R UPPER SUSPENSION PLATE, ENGINE	发动机上悬挂右
		3	1	F29-3-03	L UPPER SUSPENSION PLATE, ENGINE	发动机上悬挂左
		4	1	F29-3-04	R REAR SUSPENSION PLATE, ENGINE	发动机后悬挂右
		5	1	F29-3-05	L REAR SUSPENSION PLATE, ENGINE	发动机后悬挂左
		6	2	F29-3-06	END CAP, FRAME	车架水胶胶
		7	1	F29-3-07	REAR FORK BUSHING	平叉衬管
		8	1	F29-3-08	BOLT 10*115	5787 10*115
		9	1	F29-3-09	BOLT 10*115	5787 10*115
		10	2	F29-3-10	BOLT 8*65	5787 8*65
		11	1	F29-3-11	BOLT 8*60	5787 8*60
		12	4	F29-3-12	BOLT 8*20	5787 8*20
		13	2	F29-3-13	NUT M10	6187 M10
		14	3	F29-3-14	NUT M8	6187 M8