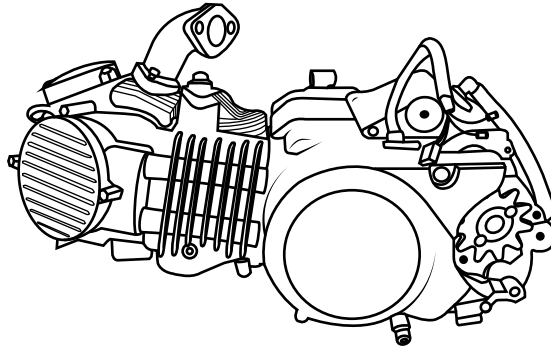




ENGINE# 1P60FMK

ENGINE# 1P63FML

YX160CC YX180CC ENGINE



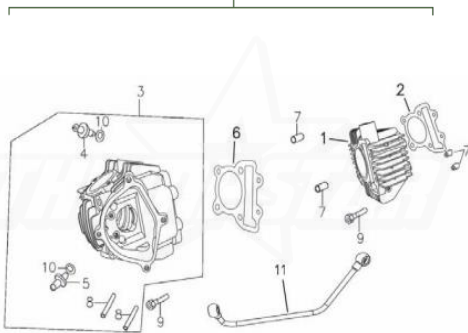
thumpstar.com.au
thumpstar.co.nz
thumpstarusa.com

FOR ILLUSTRATION ONLY

E-1 CYLINDER ASSY

POS.	PART NO	ERP CODE	ENGLISH NAME	QTY	NAME
A	TS0039		COMPLETE ASSEMBLY		
1	P040429	2103A038	CYLINDER BODY	1	YX160 [E1-1] 气缸体
2	P040430	2101B010	CYLINDER BODY SEAL PACKING	1	YX160 [E1-2] 气缸体密封垫
3	P040431	2121A000	CYLINDER HEAD ASSY	1	YX160 [E1-3] 气缸头组件
4	P040432	210-1-4	SUCTION-VALVE PIPE	1	YX160 [E1-4] 进气门导管
5	P040433	210-1-5	EXHAUST VALVE PIPE	1	YX160 [E1-5] 排气门导管
6	P040434	210B008	CYLINDER HEAD SEAL GASKET	1	YX160 [E1-6] 气缸头密封垫组件
7	P040435	97010014	ASSEMBLING PIN 10x14	4	YX160 [E1-7] 定位销10x14
8	P040436	208M036	BOLT M6x38	2	YX160 [E1-8] 双头螺栓M6x38
9	P040437	210E032	OILPIPE BOLT B	2	YX160 [E1-9] 油冷管螺栓B
10	P040438	210-1-10	O SHAPED SEAL RING	2	YX160 [E1-10] O型密封圈
11	P040439	210E030	OIL PIPE	1	YX160 [E1-11] 油通管

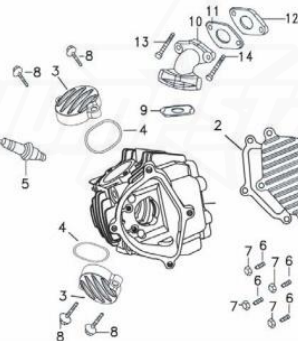
A - Assembly



E-2 CYLINDER HEAD

POS.	PART NO	ERP CODE	ENGLISH NAME	QTY	NAME
A	TS0040		Complete Assembly		
1	P040440	210A033	CYLINDER HEAD LEFT COVER	1	YX160 [E2-1] 气缸头左盖
2	P040441	2102B006	CYLINDER HEAD LEFT COVER SEAL PACKING	1	YX160 [E2-2] 气缸头左盖密封垫
3	P040442	210A032	VALVA COVER	2	YX160 [E2-3] 气门盖
4	P040443	210C074	SEAL FOR INTAKE VALVE	2	YX160 [E2-4] 气门盖密封垫
5	P040444	D001D021	NGK SPARKING PLUG	1	YX160 [E2-5] NGK 火花塞
6	P040445	F04M010	DOUBLE-HEAD SCREW 6x28	4	YX160 [E2-6] 双头螺栓M6x28
7	P040446	210-2-7	CAP NUT M6	4	YX160 [E2-7] 盖形螺母M6
8	P040447	7006016	PLATE BOLT M6x16	4	YX160 [E2-8] 内六角螺栓M6x16
9	P040448	210-2-9	SEAL PACKING FOR THE INTAKE	1	YX160 [E2-9] 进气管密封垫
10	P040449	210-2-10	INTAKE	1	YX160 [E2-10] 进气管
11	P040450	210-2-11	SEAL PACKING	1	YX160 [E2-11] 密封垫
12	P040451	210-2-12	CARBURETOR SEAL PACKING	1	YX160 [E2-12] 隔热垫
13	P040452	96006020	PLATE BOLT M6x20	2	YX160 [E2-13] 带盘螺栓M6x20
14	P040453	96006030	PLATE BOLT M6x30	2	YX160 [E2-14] 带盘螺栓M6x30

A - Assembly



E-3 CAMSHAFT ASSEMBLY

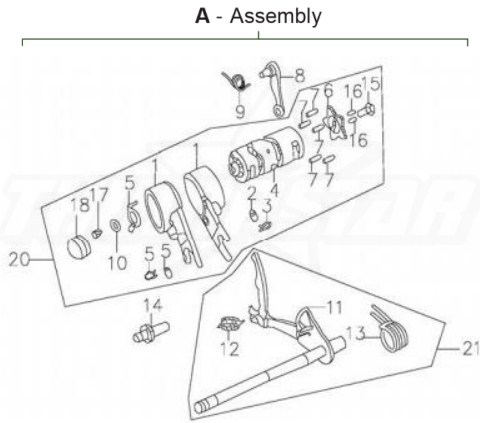
POS.	PART NO	ERP CODE	ENGLISH NAME	QTY	NAME
A	TS0041		Complete Assembly		
1	P040454	210L050	ROCKERARM SHAFT FENDER	1	YX160 [E3-1] 摇臂轴挡板
2	P040455	210F020	CAMSHAFT SUBASSEMBLY	1	YX160 [E3-2] 凸轮轴组件

E-7 CRANKCASE COVER		POS.	PART NO	ERP CODE	ENGLISH NAME	QTY	NAME
		A	TS0045		Complete Assembly		
		1	P040513	219A034	RIGHT CRANKCASE COVER	1	YX160 [E7-1] 右曲轴箱盖
		2	P040514	2101B002	RIGHT CRANKCASE SEALED	1	YX160 [E7-2] 右曲轴箱盖密封垫
		3	P040515	97008012	PITCHED PIN q8x12	2	YX160 [E7-3] 定位销q8x12
		4	P040516	96006040BCF	PLATE BOLT M6x40	5	YX160 [E7-4] 带盘螺栓M6x40
		5	P040517	96006080BCF	PLATE BOLT M6x80	1	YX160 [E7-5] 带盘螺栓M6x80
		6	P040518	96006065BCF	PLATE BOLT M6x65	2	YX160 [E7-6] 带盘螺栓M6x65
		7	P040519	D00C038LH	OIL SCALE ASSEMBLY	1	YX160 [E7-7] 机油标尺组合
		8	P040520	D00C0960	O-SHAPED SEALED RING 18x3.5	1	YX160 [E7-8] O型密封圈18x3.5
		9	P040521	F001C015	OIL SEAL 16x28x7	1	YX160 [E7-9] 起动轴油封16x28x7
		10	P040522	219L031	CLUTCH CABLE CLIP	1	YX160 [E7-10] 离合器拉线固定板
		11	P040523	E13G010	CLUTCH CONTROL LEVER	1	YX160 [E7-11] 离合器凸轮轴组件
		12	P040524	E13H007	CONTROL LEVER RETURN SPRING	1	YX160 [E7-12] 离合器凸轮轴弹簧
		13	P040525	F04C030	OIL SEAL 12x18x5	1	YX160 [E7-13] 离合器凸轮轴油封12x18x5
14	P040526	96006085BCF	PLATE BOLT M6x85	1	YX160 [E7-14] 带盘螺栓M6x85		

E-8 LEFT CRANKCASE COVER AND MAGNETIC		POS.	PART NO	ERP CODE	ENGLISH NAME	QTY	NAME
		A	TS0046		Complete Assembly		
		1	P040527	A019A070	LEFT CRANKCASE COVER	1	YX160 [E8-1] 左箱盖8-6#
		2	P040528	210-8-2	MAGNETON	1	YX160 [E8-2] 磁电机总成
		3	P040529	A014D060	FLYWHEEL	1	YX160 [E8-3] 磁电机转子
		4	P040530	A0176D070	STATOR MODULE	1	YX160 [E8-4] 磁电机定子
		5	P040531	17710000BX	HEX NUT M10x1.25	1	YX160 [E8-5] 磁电机螺母M10x1.25
		6	P040532	D001C019	OILE SEAL 30x42x4.5	1	YX160 [E8-6] 油封30x42x4.5
		7	P040533	D002C062	O-SHAPED SEAL 107x2	1	YX160 [E8-7] O型密封圈107x2
		8	P040534	F002C048	O-SHAPED SEAL (6.8x1.9)	1	YX160 [E8-8] O型密封圈6.8x1.9
		9	P040535	81906016	SCREW M6x16	2	YX160 [E8-9] 平头螺钉M6x16
		10	P040536	221-8-10	PLATE BOLT M6x28	1	YX160 [E8-10] 带盘螺栓M6x28
11	P040537	221-8-11	PLATE BOLT M6x35	2	YX160 [E8-11] 带盘螺栓M6x35		

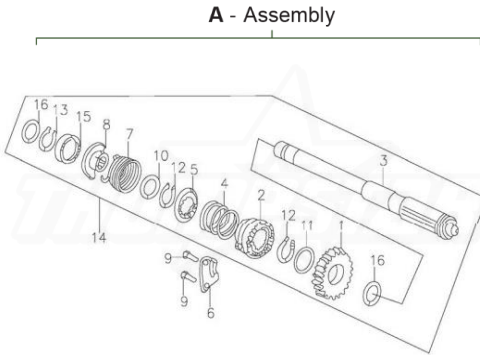
E-9 LUTCH COMPONENT PART		POS.	PART NO	ERP CODE	ENGLISH NAME	QTY	NAME
		A	TS0047		Complete Assembly		
		1	P040538	210-9-1	CLUTCH EXTERNAL ASSY	1	YX160 [E9-1] 离合器外罩组合
		2	P040539	210-9-2	HOLDING RING	1	YX160 [E9-2] 定位环
		3	P040540	210-9-3	CENTRE OF CLUTCH COVER	1	YX160 [E9-3] 离合器中心套
		4	P040541	210-9-4	CLUTCH FRICTION DISK	5	YX160 [E9-4] 离合器摩擦盘
		5	P040542	210-9-5	CLUTCH BOARD	4	YX160 [E9-5] 离合器板
		6	P040543	210-9-6	CLUTCH PRESSURE PLATE	1	YX160 [E9-6] 离合器压盘
		7	P040544	210-9-7	CLUTCH LIFT SLAB	1	YX160 [E9-7] 离合器升板
		8	P040545	210-9-8	BEARING	1	YX160 [E9-8] 轴承
		9	P040546	210-9-9	CLUTCH SPRING	4	YX160 [E9-9] 离合器弹簧
		10	P040547	210-9-10	CLUTCH PUSH ROD	1	YX160 [E9-10] 离合器推杆
		11	P040548	210-9-11	BOLT	4	YX160 [E9-11] 螺栓
		12	P040549	210-9-12	ROUND NUT	1	YX160 [E9-12] 圆螺母
		13	P040550	210-9-13	DISK SHAPED WASHER	1	YX160 [E9-13] 碟型垫圈
		14	P040551	210-9-14	SPLINE SHAFT WASHER	1	YX160 [E9-14] 花键垫圈
15	P040552	210-9-15	CLUTCH ASSEMBLY	1	YX160 [E9-15] 离合器总成		

E-10 SHIFTING MOTIVATOR



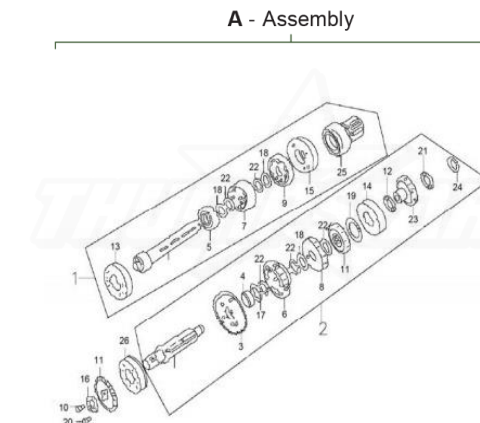
POS.	PART NO	ERP CODE	ENGLISH NAME	QTY	NAME
A	TS0048		Complete Assembly		
1	P040553	210-10-1	GEAR SHIFT FORK	2	YX160 [E10-1] 齿轮拨叉
2	P040554	210-10-2	GUIDE PIN	1	YX160 [E10-2] 导向销
3	P040555	210-10-3	SPRING CLIP	1	YX160 [E10-3] 弹簧夹
4	P040556	210K060	SHIFTING DRUM	1	YX160 [E10-4] 变速鼓
5	P040557	210K098	LOCATOR WASHER	1	YX160 [E10-5] 变速鼓定位板垫圈
6	P040558	210-10-6	VARIATOR STRONGBACSTRONGBA	1	YX160 [E10-6] 五星板
7	P040559	210-10-7	STRONGBACK PIN BOLT	5	YX160 [E10-7] 定位板销钉
8	P040560	D05K070	VARIATOR STRONGBACK SUB ASS	1	YX160 [E10-8] 变速鼓定位板组件
9	P040561	D00H009	STRONGBACK SPRING	1	YX160 [E10-9] 定位板弹簧
10	P040562	A00K062	WASHER	1	YX160 [E10-10] 变速鼓垫圈
11	P040563	210-10-11	SHIFTING SUBASSEMBLY	1	YX160 [E10-11] 换挡轴
12	P040564	210-10-12	SPRING	1	YX160 [E10-12] 弹簧
13	P040565	210-10-13	RETURN SPRING	1	YX160 [E10-13] 复位弹簧
14	P040566	D00K024	ASSEMBLING SPING	1	YX160 [E10-14] 换挡臂定位螺栓
15	P040567	210-10-15	BOLT WITH SALVER	1	YX160 [E10-15] 带盘螺栓
16	P040568	210-10-16	ASSEMBLING PIN	2	YX160 [E10-16] 定位销
17	P040569	210-10-17	SWITCH PRESSBOARD	1	YX160 [E10-17] 开关压板
18	P040570	210-10-18	MOVING CONTACT SUBASSEMBLY	1	YX160 [E10-18] 动触点组合
19	P040571	210-10-19	SOCKET HEAD CAP SCREW	1	YX160 [E10-19] 内六角螺栓
20	P040572	210K060	SHIFTING YOKE VARIATOR	1	YX160 [E10-20] 变速鼓组合
21	P040573	C03K000	SHIFTING SUBASSEMBLY	1	YX160 [E10-21] 换挡臂组件

E-11 START ASSY



POS.	PART NO	ERP CODE	ENGLISH NAME	QTY	NAME
A	TS0049		Complete Assembly		
1	P040574	210-11-1	START GEAR	1	YX160 [E11-1] 起动车轮
2	P040575	210-11-2	STARTING RATCHET WHEEL	1	YX160 [E11-2] 起动车轮
3	P040576	20821000	STARTING SHAFT	1	YX160 [E11-3] 起动车轴
4	P040577	210-11-4	SPRING	1	YX160 [E11-4] 弹簧
5	P040578	210-11-5	RATCHET WHEEL SPRINGS SUPPORT	1	YX160 [E11-5] 棘轮弹簧座
6	P040579	210-11-6	RATCHET WHEEL GUIDE RUNNER	1	YX160 [E11-6] 棘轮导向板
7	P040580	210-11-7	STARTING SHAFT RETURN SPRING	1	YX160 [E11-7] 起动车轴复位弹簧
8	P040581	210-11-8	STARTING SHAFT SPRING SUPPORT	1	YX160 [E11-8] 起动车轴弹簧座
9	P040582	210-11-9	BOLT	2	YX160 [E11-9] 螺栓
10	P040583	210-11-10	WASHER	1	YX160 [E11-10] 垫圈
11	P040584	210-11-11	WASHER	2	YX160 [E11-11] 垫圈
12	P040585	210-11-12	WASHER	3	YX160 [E11-12] 垫圈
13	P040586	210-11-13	SHIELD RING	1	YX160 [E11-13] 护挡圈
14	P040587	210-11-14	STARTING SHAFT ASSEMBLY	1	YX160 [E11-14] 起动车轴组合
15	P040588	210-11-15	SPRING COVER	1	YX160 [E11-15] 弹簧盖
16	P040589	210-11-16	WASHER	2	YX160 [E11-16] 垫圈

E-12 SLOWING DOWN SUBASSEMBLY



POS.	PART NO	ERP CODE	ENGLISH NAME	QTY	NAME
A	TS0050		Complete Assembly		
1	P040590	E13K030	TRANSMISSION MMAIN SHAFT	1	YX160 [E12-1] 传动主轴 (不含轴承)
2	P040591	E13K040	TRANSMISSION COUNTENSHAFT	1	YX160 [E12-2] 传动副轴 (不含轴承)
3	P040592	210-12-3	GEAR WHEEL	1	YX160 [E12-3] 齿轮
4	P040593	210-12-4	GEARED SLEEVE	1	YX160 [E12-4] 齿轮套
5	P040594	210-12-5	GEAR WHEEL	1	YX160 [E12-5] 齿轮
6	P040595	210-12-6	SPLINE SHAFT DRIVER GEAR	1	YX160 [E12-6] 花键从动齿轮
7	P040596	210-12-7	SPLINE SHAFT MAIN DRIVEN GEAR	1	YX160 [E12-7] 花键主动齿轮
8	P040597	210-12-8	GEAR WHEEL	1	YX160 [E12-8] 齿轮
9	P040598	210-12-9	GEAR WHEEL	1	YX160 [E12-9] 齿轮
10	P040599	210-12-10	SPLINE SHAFT GEAR WHEEL	1	YX160 [E12-10] 花键齿轮
11	P040600	210-12-11	DRIVE SPROCKET	1	YX160 [E12-11] 主动链轮
12	P040601	210-12-12	DRIVE SPROCKET CLOSING RING	1	YX160 [E12-12] 主动链轮卡圈
13	P040602	2766001	BEARING	1	YX160 [E12-13] 轴承6001
14	P040603	276152712	BEARING 152712	1	YX160 [E12-14] 滚针轴承152712
15	P040604	2766203	BEARING 6203	1	YX160 [E12-15] 轴承6203
16	P040605	210-12-16	THRUST WASHER	1	YX160 [E12-16] 推力垫圈
17	P040606	210-12-17	SPLINE SHAFT WASHER	1	YX160 [E12-17] 花键垫圈
18	P040607	210-12-18	SPLINE SHAFT WASHER	3	YX160 [E12-18] 花键垫圈
19	P040608	210-12-19	SPLINE SHAFT WASHER	2	YX160 [E12-19] 花键垫圈
20	P040609	210-12-20	BOLT	2	YX160 [E12-20] 螺栓
21	P040610	210-12-21	SPLINE SHAFT WASHER	1	YX160 [E12-21] 推力垫圈
22	P040611	210-12-22	SHIELD RING	5	YX160 [E12-22] 挡圈
23	P040612	210-12-23	STAR ROLLING GEAR	1	YX160 [E12-23] 起动车轴过桥齿轮
24	P040613	210-12-24	SHIELD RING	1	YX160 [E12-24] 挡圈 15
25	P040614	210-12-25	CLITCH GEAR SLEEVE	1	YX160 [E12-25] 离合器齿轮套
26	P040615	2766303X3	BEARING 6303X3	1	YX160 [E12-26] 轴承6303X3

